

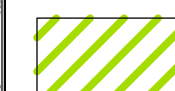



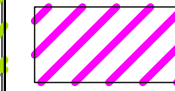

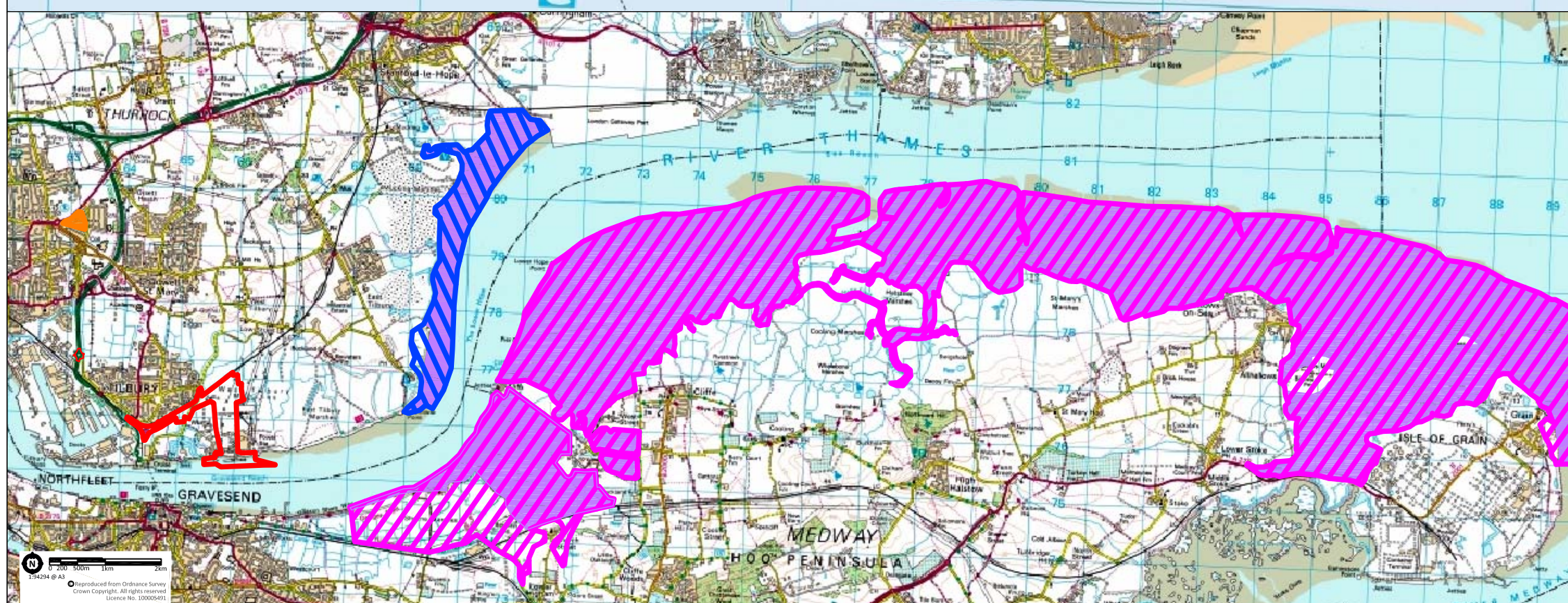


-  ORDER LIMITS
-  LOCAL WILDLIFE SITE (LoWS)
-  POSSIBLE LoWS EXPANSION UNDER CONSIDERATION FROM THE LoWS PANEL
-  SITES WITH PROTECTION UNDER ADOPTED CORE STRATEGY BIODIVERSITY + GREEN INFRASTRUCTURE POLICES CSSP5, CSTEP18, CSTEP19, PMD7
-  HANGMAN'S WOOD & DENEHOLES SSSI
-  THAMES ESTUARY & MARSHES SPA/RAMSAR SITE
-  SOUTH THAMES ESTUARY & MARSHES SSSI
-  MUCKING FLATS & MARSHES SSSI



REV	DATE	DESCRIPTION
DRAWING TITLE		
SITE LOCATION AND RELEVANT ECOLOGICAL DESIGNATIONS		
SCALE		DRAWN
AS SHOWN	STM	
DATE		CHECKED
OCT 2017	RR	

FIG. 10.1